



Townsend Bombing Range

Proposed Action and Alternatives

Proposed Action

The Proposed Action evaluated in the Environmental Impact Statement is to modernize and expand Townsend Bombing Range (TBR) to accommodate Marine Aircraft Group 31's requirement to train with inert (non-explosive) precision-guided munitions (PGM) and the larger weapon danger zones their use requires.

The Proposed Action includes the following interrelated components:

- Acquisition of land;
- Acquisition of a timber easement;
- Modification of existing airspace;
- Construction of infrastructure to support PGM training; and
- Improvement of training capabilities.



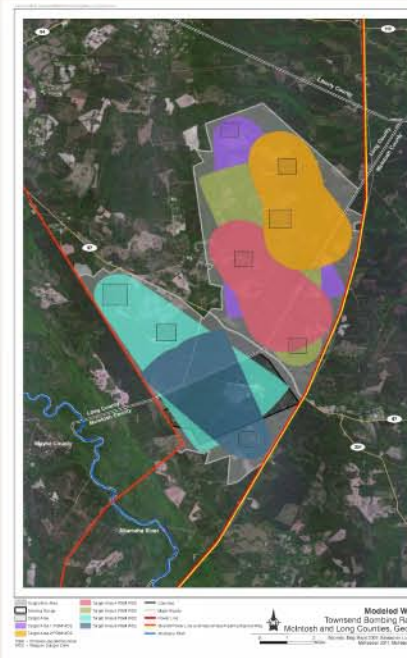
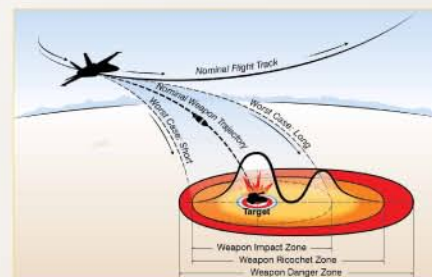
Purpose and Need

The purpose of the Proposed Action is to provide an air-to-ground training range capable of providing a wider variety of air-to-ground operations, including the use of PGMs, to meet current training requirements.

The Proposed Action is needed to more efficiently meet current training requirements for Marine Corps aviation assets by significantly increasing air-to-ground training capabilities in the Beaufort, SC region.

Acquisition of Land

- Acquire land to fully contain the weapon danger zones resulting from the proposed training.



Construction of Infrastructure to Support PGM Training

- New target areas.
- Support buildings and observation tower.
- Roads and fencing.



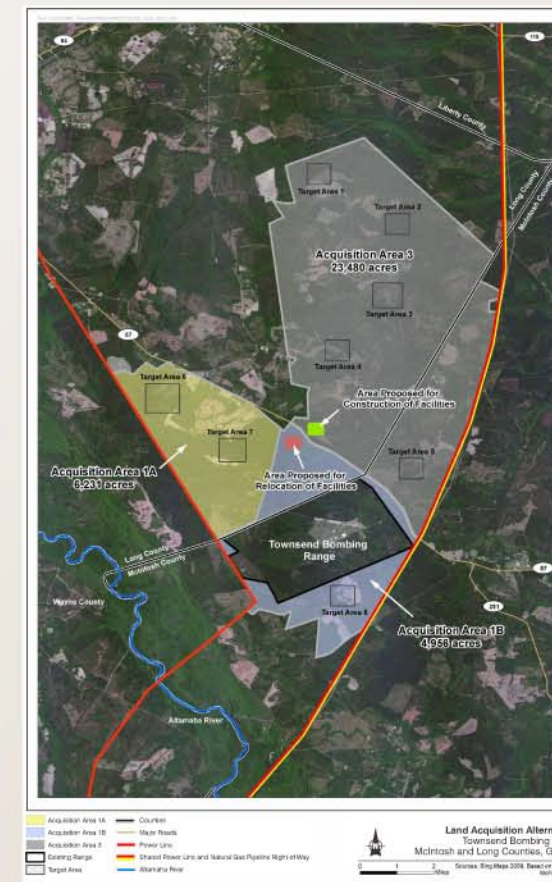
Improvement of Training Capabilities

- Currently, Marine Corps aircrew can accomplish 47% of their air-to-ground training requirements at TBR.
- The Proposed Action would allow Marine Corps aircrew to complete up to 85% of their air-to-ground training requirements.

Alternatives

| Alternative | 1 | 2 | 3 | 4* | No Action |
|--|----------------|-------------------|------------------------|-------------------|-----------|
| Acquisition Area | 1A + 1B | 3 | 1A + 1B + 3 | 1B + 3 | N/A |
| Acreage | 11,187 | 23,480 | 34,667 | 28,436 | N/A |
| Target Areas | 6, 7, 8 | 1, 2, 3, 4, 5 | 1, 2, 3, 4, 5, 6, 7, 8 | 1, 2, 3, 4, 5, 8 | N/A |
| Facilities | All Facilities | Observation Tower | Observation Tower | Observation Tower | N/A |
| Sorties | 3,583 | 4,243 | 4,243 | 4,243 | 2,358 |
| Training and Readiness Percentage Met | 72% | 85% | 85% | 85% | 47% |
| Availability of Targets During Range Maintenance Periods | No | No | Yes | Yes | No |
| Minimize Relocation of Private Citizens | No | Yes | No | Yes | N/A |

* Preferred Alternative



Your involvement assists the Marine Corps in making an informed decision. Thank you for your participation.
For more information, please visit the project Web site at: www.townsendbombingrangeis.com